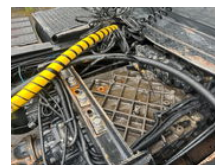
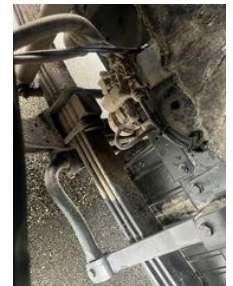
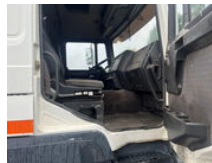


# MAN 19.403 F2000 MANUAL ZF BIG AXLE KIPPER HYDRAULIC PTO

## General features

Brand	MAN
Model	19.403 F2000
Subcategory	Cab over engine
Odometer reading	130.982km
Construction year	1998
Date of first registration	09-09-1998
Color	white
Condition	Used
General condition	Good
Fuel	Diesel
Emission class	Euro 2



## Characteristics

Empty weight	6.850kg
Load capacity	13.650kg
Max. weight	20.500kg
Cabin	full

# MAN 19.403 F2000 MANUAL ZF BIG AXLE KIPPER HYDRAULIC PTO

## Technical specifications

Number of axes	2
Axis configuration	4x2
Transmission	Manual
assets	400hp

## Accessories

- 
- 
- Anti-lock braking system
- 
- Air conditioning
- Aluminium fuel tank
- Anti-lock braking system
- Leaf spring suspension
- Electrically operated windows
- Low-noise
- Air suspension
- PTO
- Parabolic suspension
- Spare wheel
- Sleeper cab
- Speed limiter
- Spoilers
- Visor