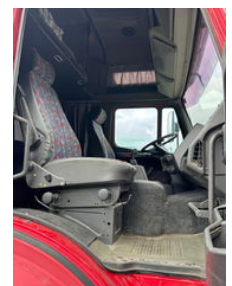
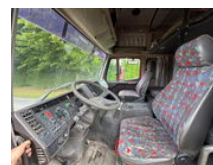


Mercedes-Benz SK 2638 V8 6X2 STEEL SPRING BIG AXLE HIGH CABINE PERFECT CONDITIONS

General features

Brand	Mercedes-Benz
Model	SK 2638 V8
Subcategory	Chassis cab
Odometer reading	651.150km
Construction year	1996
Date of first registration	07-07-1996
Color	Red
Condition	Used
General condition	Very good
Fuel	Diesel
Emission class	Euro 1



Characteristics

Empty weight	9.000kg
Load capacity	17.000kg
GVW	26.000kg
Cabin	Sleeper cabin
Cylinder contents	14.618cc

Mercedes-Benz SK 2638 V8 6X2 STEEL SPRING BIG AXLE HIGH CABINE PERFECT CONDITIONS

Technical specifications

Number of axes	3
Axis configuration	6x2
Transmission	Semi-automatic
Engine output	380kw

Accessories

-
-
- Anti-lock braking system
- ASR (Anti-Slip Regulation/Traction Control)
- Trailer coupling
- Anti-lock braking system
- Leaf spring suspension
- Cabin
- Cruise control
- Differential Lock
- Electrically operated windows
- Electric windows
-
- Closed cabin
- Air Suspension Seats
- Air horn
- Fog lights
- Parabolic suspension
- Passenger seat
- Sleeper cab
- Speed limiter
- Vehicle heater
- Immobilizer
- Power steering
- Coupling
- Spotlight rear
- Spotlight front
- Heater
- Front window
- Visor
- lifting axle