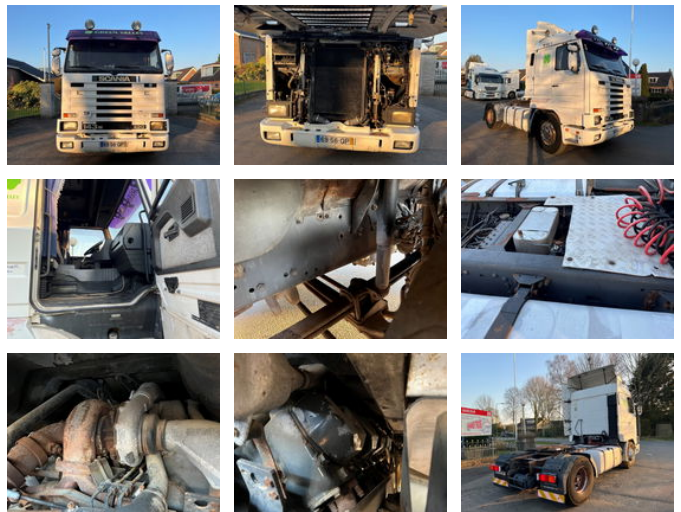


Scania R143-420 V8 143M MANUAL GEARBOX AIRCO RETARDER TOP STREAMLINER

General features

Brand	Scania
Model	R143-420 V8
Subcategory	Cab over engine
Odometer reading	536.271km
Construction year	1996
Date of first registration	16-01-1996
Color	White
Condition	Used
General condition	Good
Fuel	Diesel
Emission class	Euro 1



Characteristics

Empty weight	7.500kg
Load capacity	10.500kg
GWV	20.500kg
Cabin	Sleeper cabin

Scania R143-420 V8 143M MANUAL GEARBOX AIRCO RETARDER TOP STREAMLINER

Technical specifications

Number of axes	2
Axis configuration	4x2
Transmission	Manual
Engine output	420hp

Accessories

-
-
-
- Air conditioning
- Leaf spring suspension
- Roof spoiler
- Twin fuel tank
- Electrically operated windows
-
- Air horn
- Air suspension
- Fog lights
-
- Sleeper cab
- Spoilers
- Spotlights
- Visor