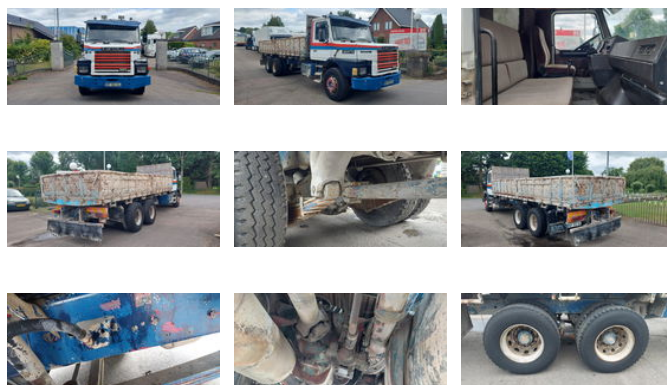


Scania T112 112 WITH 113 ENGINE!!! FULL STEEL SUSPENSION

General features

Brand	Scania
Model	T112
Subcategory	Tipper
Odometer reading	697.367km
Construction year	1983
Date of first registration	20-04-1983
Color	White
Condition	Used
General condition	Good
Fuel	Diesel
Emission class	Euro 0



Characteristics

Empty weight	10.800kg
Load capacity	15.200kg
GVW	26.000kg
Cabin	No
Cylinder contents	11.020cc

Scania T112 112 WITH 113 ENGINE!!! FULL STEEL SUSPENSION

Technical specifications

Number of axes	3
Axis configuration	6x2
Transmission	Manual
Engine output	320hp

Accessories

-
-
-
- Trailer coupling
- Power take-off (PTO)
- Leaf spring suspension
- Cabin
- Differential Lock
- Air horn
- PTO
- Speed limiter
- Power steering
- Coupling
- Spotlight rear
- Spotlight front
- Spotlights
- Front window
- Visor
- lifting axle