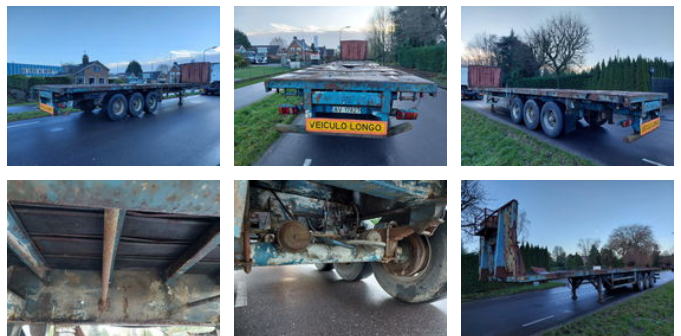


Trailor 3 axle STEEL Suspension platfrom

General features

Brand	Trailor
Subcategory	Flatbed
Construction year	1983
Date of first registration	06-06-1983
Color	Blue
Condition	Used
General condition	Good



Characteristics

Empty weight	6.000kg
Load capacity	33.000kg
GVW	39.000kg

Trailor 3 axle STEEL Suspension platfrom

Technical specifications

Number of axes	3
----------------	---

Accessories

-
- Steel suspension