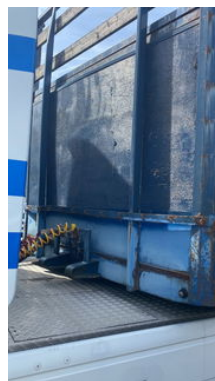


Zwalve 3 BPW axle with DRUM brake

General features

Brand	Zwalve
Subcategory	Flatbed
Licence plate	OD-18-DR
Construction year	1993
Condition	Used
General condition	Good



Characteristics

Empty weight	8.610kg
Load capacity	33.390kg
GWV	42.000kg
Length	1.360cm
Width	250cm

Zwalve 3 BPW axle with DRUM brake

Technical specifications

Number of axes

3

Accessories

-
- Anti-lock braking system
- Anti-lock braking system
-